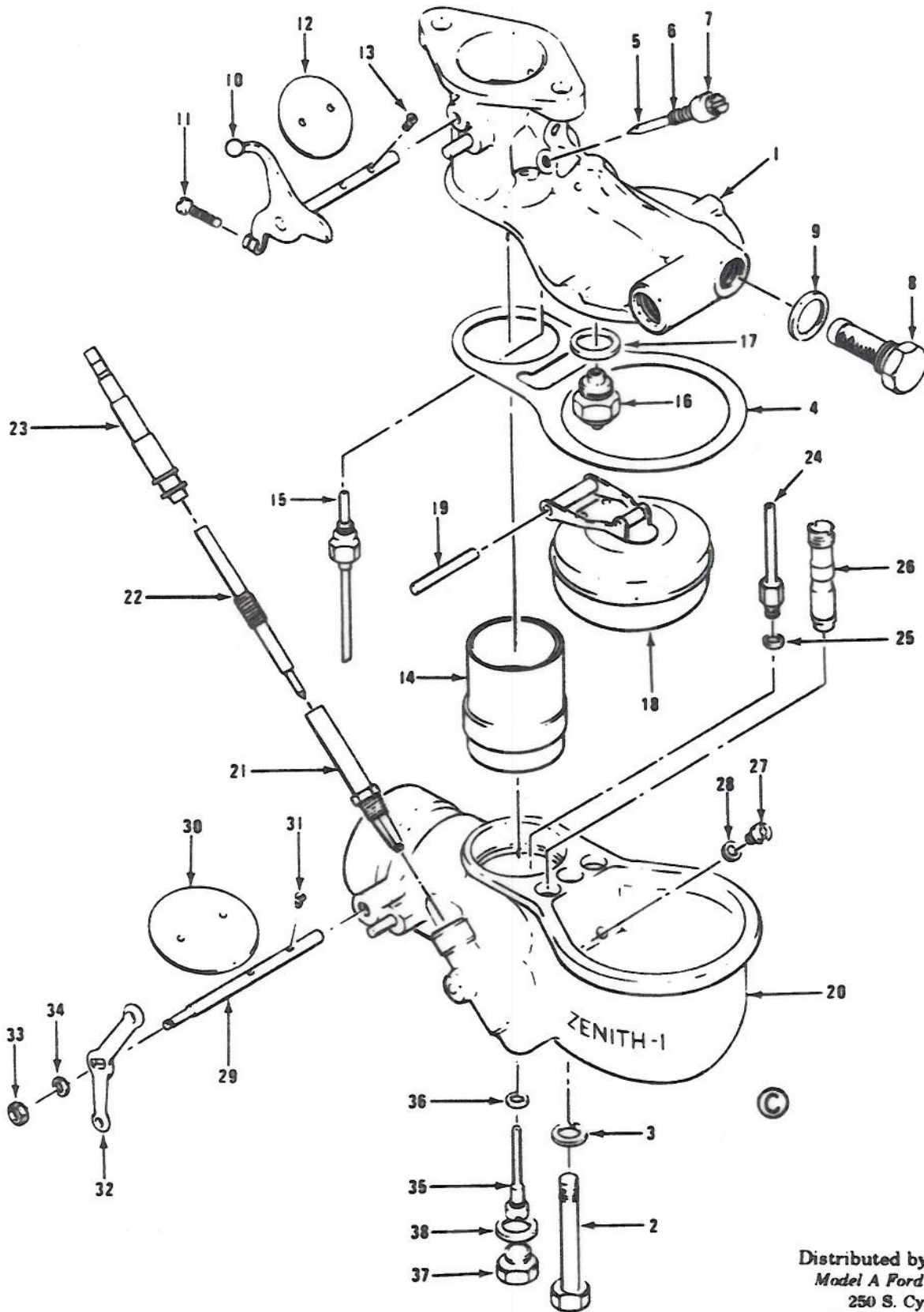


**Model A Ford  
CARBURETOR - Zenith I  
1928-1931**



Distributed by:  
Model A Ford Club of America  
250 S. Cypress Street  
La Habra, California 90631

**Model A Ford  
CARBURETOR - Zenith I  
1928-1931  
[P/N A-9510-B]**

Index Number	Part Number	Nomenclature	Number Required
1	A-9520-A	Upper Body Assembly	1
2	A-20933-S7	Hex Head Bolt 3/8"-24 ( x 3 3/16)	1
3	A-22257-S2	Lockwasher 3/8" (1/16 x 41/64)	1
4	A-9592	Bowl Gasket	1
5	A-9577	Idle Adjusting Needle	1
6	A-9578	Idle Adjusting Spring	1
7	A-9579	Idle Adjusting Cap	1
8	A-9559	Strainer Assembly	1
9	A-22333	Fiber Washer 1/2" (3/64 x 3/4)	1
10	A-9581-A	Throttle Shaft Assembly	1
11	A-20108-S7	Fillister Head Screw #8-36 ( x 5/8)	1
12	A-9585	Throttle Plate	1
13	A-20042-S7	Oval Head Screw #5-40 ( x 19/64)	2
14	A-9586-B	Single Venturi	1
15	A-9542	Idle Jet	1
16	A-9564-A	Carburetor Fuel Valve Assembly	1
17	A-22333	Fiber Washer	1
18	A-8550	Float Assembly	1
19	A-9588	Float Axle	1
20	A-9512-B	Lower Body Assembly	1
21	A-9528	Fuel Adjusting Needle Housing	1
-	A-9532-R	Adjusting Needle Seat	1
-	A-22086	Fiber Washer 3/16" (3/64 x 5/16)	1
22	A-9525	Fuel Adjusting Needle	1
23	A-9570	Choke Driver	1
24	A-9538-B	Cap Jet	1
25	A-22086	Fiber Washer 3/16" (3/64 x 5/16)	1
26	A-9545	Secondary Well Insert	1
27	A-9575	Compensator Jet	1
28	A-22086	Fiber Washer 3/16" (3/64 x 5/16)	1
29	A-9547	Air Shutter Shaft	1
30	A-9549	Air Shutter Plate	1
31	A-20042-S7	Oval Head Screw #5-40 ( x 19/64)	2
32	A-9548	Air Shuttle Lever	1
33	A-21548-S7	Hex Nut #8-36 (5/32 x 5/16)	1
34	A-22062	Lockwasher 5/32" (1/16 x 11/32)	1
35	A-9534	Main Jet	1
36	A-22086	Fiber Washer 3/16" (3/64 x 5/16)	1
37	A-9590	Drain Plug	1
38	A-22256	Fiber Washer 3/8" (3/64 x 9/16)	1